

New Century AirCenter Business Park

New Century, Kansas



New Century AirCenter Business Park consists of 667 available acres located in unincorporated Johnson County, Kansas. New Century has access to BNSF Railway and has received certification as part of BNSF Railway's Site Certification program. BNSF certification ensures a site is ready for rapid acquisition and development through a comprehensive evaluation of existing and projected infrastructure, environmental and geotechnical standards, utility evaluation and site availability.

SELECTING A CERTIFIED SITE CAN:

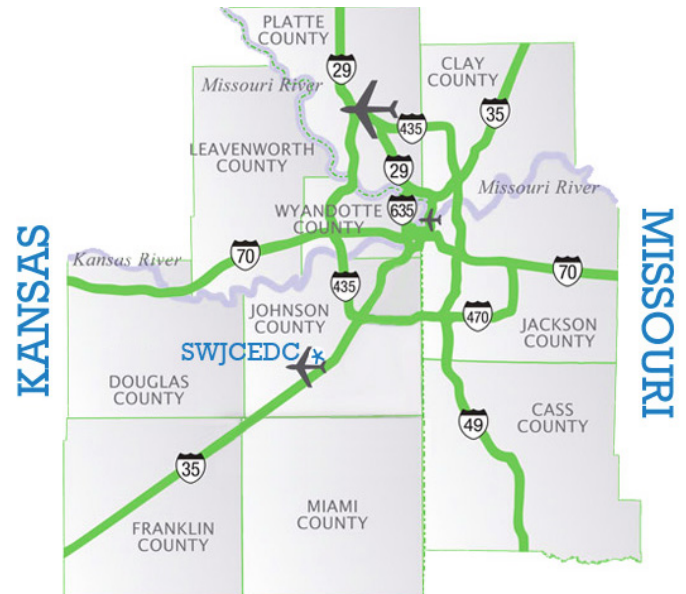
- Reduce development time
- Increase speed to market
- Reduce upfront development risk of rail-served industrial sites

PROPERTY DETAILS

New Century AirCenter Business Park consists of 667 available acres and is divided into two main areas, 287 acres and 380 acres. New Century is conveniently located adjacent to Interstate 35, with quick access to other Kansas City region interstates including: I-29, I-70, I-435, I-635, I-470 and I-670.

SITE DETAILS

- 667 acres available for development
- Direct access to BNSF
- Industrial zoning



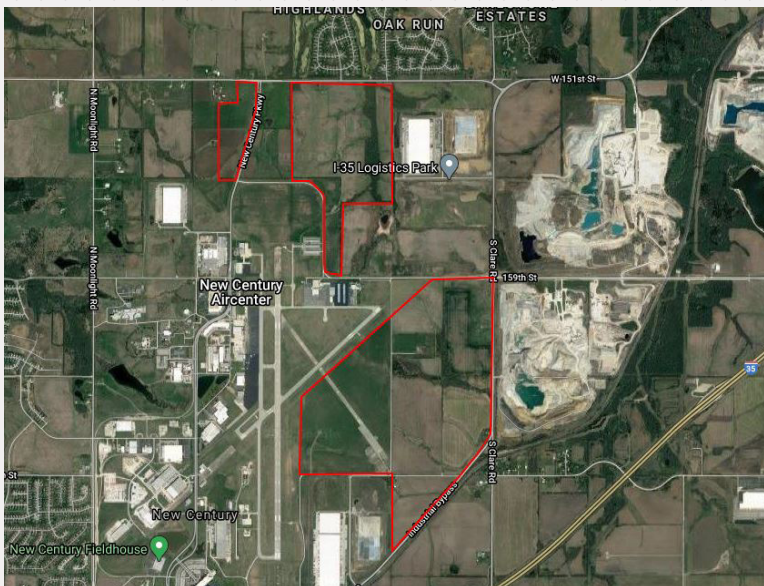
913.489.3990
BusinessMovesHere.com

CONTACT INFORMATION

Greg Martinette
President and CEO Southwest Johnson County EDC
P: 913.489.3990 • C: 913.961.8495
greg@swjocoksedc.com

Justin Duff
Senior Director, Development
VanTrust Real Estate
O: 816.569.1441 • D: 816.569.1451 • M: 913.238.5193
justin.duff@vantrustre.com

John Rider
BNSF Regional Manager
913.551.4148 • john.rider@bnsf.com



SITE DETAILS

Land Area	667 acres
Zoning	Industrial
Price	Please contact Southwest Johnson County Economic Development Corporation for lease prices.

UTILITIES

Electric	Evergny
Gas	Atmos Energy
Water	New Century Water Service
Wastewater	Johnson County Wastewater
Telecommunications	AT&T and CenturyLink

DESCRIPTION

New Century AirCenter is a 2100 acre multimodal (Air, Rail, Truck) business park located 30 minutes from downtown Kansas City along Interstate 35 in Southwest Johnson County, Kansas.

POPULATION

New Century	
15 mile radius	304,782
50 mile radius	2.4M
Johnson County	597,555
Kansas City Metropolitan Area	2.1M

WORKFORCE

Total Employment	
Johnson County	602,401
Kansas City Metropolitan Area	1.1M

BNSF PREMIER PARKS, SITES AND TRANSLOAD PROGRAM

BNSF Certified Sites are a part of the Premier Parks, Sites and Transload program which is a strategic approach to addressing the increasing demand for customer site locations by developing various types of facilities across the BNSF network. BNSF Certified Sites have been reviewed by an industry expert in order to ensure accurate, reliable data. Our goal is to provide an inventory of rail-served sites that are available for immediate development.*

* In order to ensure a safe, efficient and economical switch operation, BNSF will want to review and approve the engineering plans to serve each tenant facility.

For more information on BNSF's Certified Sites Program, please visit www.bnsf.com/rail-development or call 817-593-1092